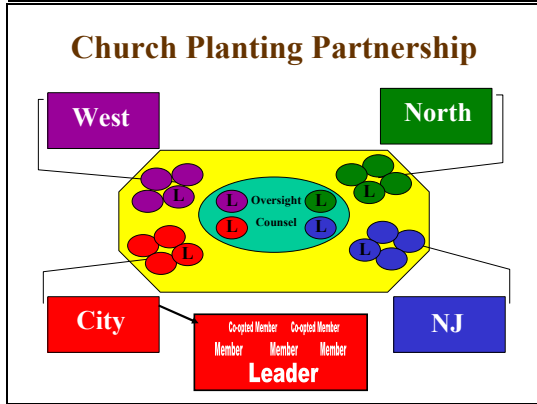


Slide 1



**Metro Philadelphia  
Church Planting  
Partnership**

Slide 3



Slide 4



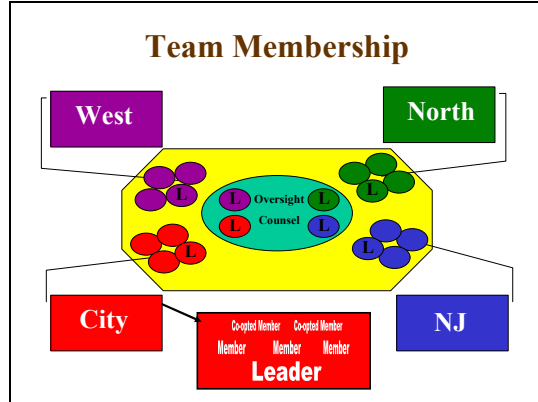
**Teams**

Slide 5

**Church Planting Team**

Each presbytery elects/appoints  
3 or 4 members to a  
**Church Planting Team**  
who represent the presbytery  
in the Partnership  
and represent the Partnership  
to the presbytery.

Slide 6



Slide 7



Slide 8

### Facilitating Responsibilities

Church Planting Teams bring all necessary logistical and facilitating motions to the floor of Presbytery:

- Calls to Church Planters
- Recognition of Mission Churches
- Appointments of Provision Sessions
- Recommendations for Organization
- Approvals of Candidates for Assessment

Slide 9

### Strategic Responsibilities

Church Planting Teams must think missionally and plan strategically for kingdom extension:

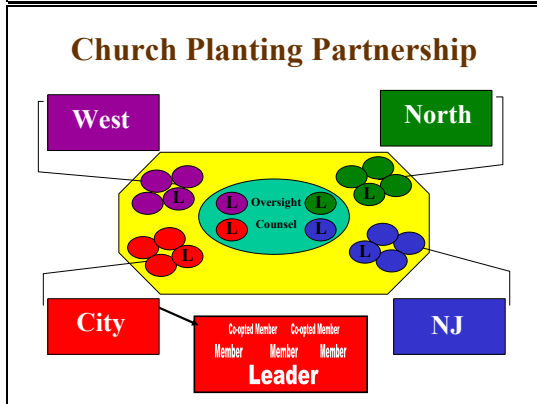
- Provide for coaching, care, & support of planters
- Remain current on changes in culture and the field
- Select "next best" places to plant
- Keep watch list of prospective planters

Slide 10

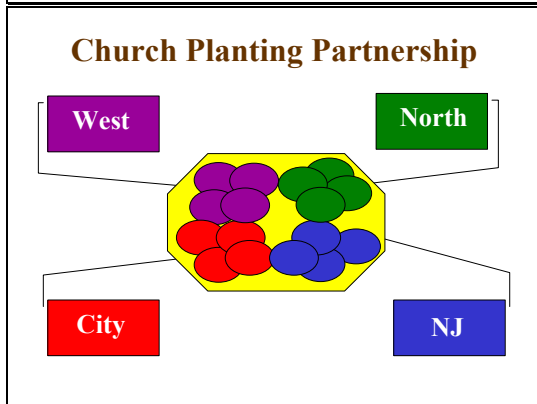


Partnership

Slide 11



Slide 12



Slide 13

## Partnership Responsibilities

The Partnership develops a unified regional vision and shares resources across presbytery borders:

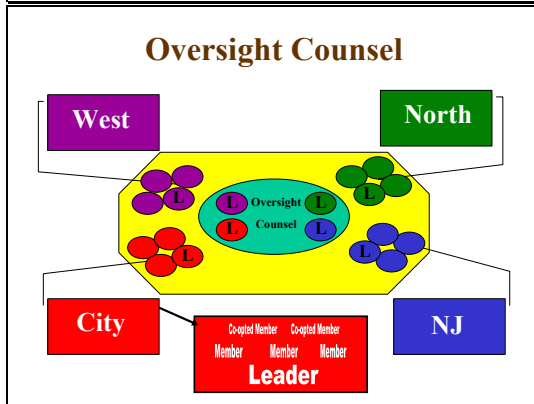
- Builds awareness of God's work in the region
- Pools wisdom, experience and resources
- Addresses challenges faced by all presbyteries

Slide 14

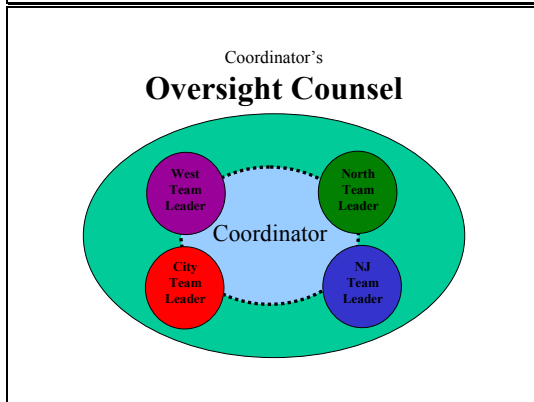


## Oversight Counsel

Slide 15



Slide 16



Slide 17

## Counsel Responsibilities

The Oversight Counsel provides encouragement, advice and accountability to the Coordinator:

- Reviews activities
- Offers advice on important issues
- Tracks support raising, income and expenses
- Recommends terms of call to presbyteries