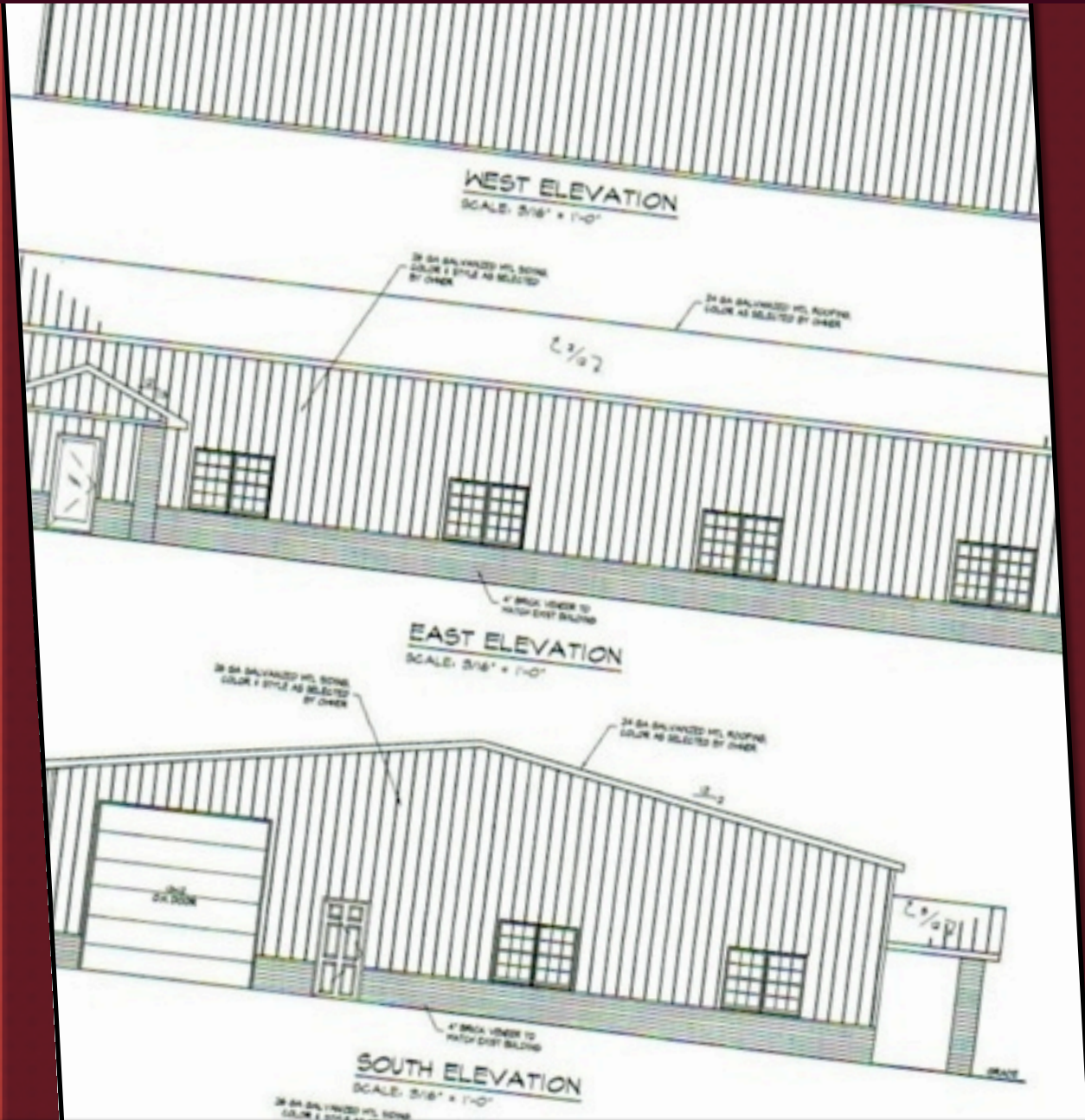




A FIRM FOUNDATION



A Plan to Establish a North America Disaster Response Warehouse



mna disaster response

Mission To North America 1700 North Brown Road Suite 101 Lawrenceville, GA 30043



For no one can lay a foundation other than that which is laid, which is Jesus Christ. | Corinthians 3:11



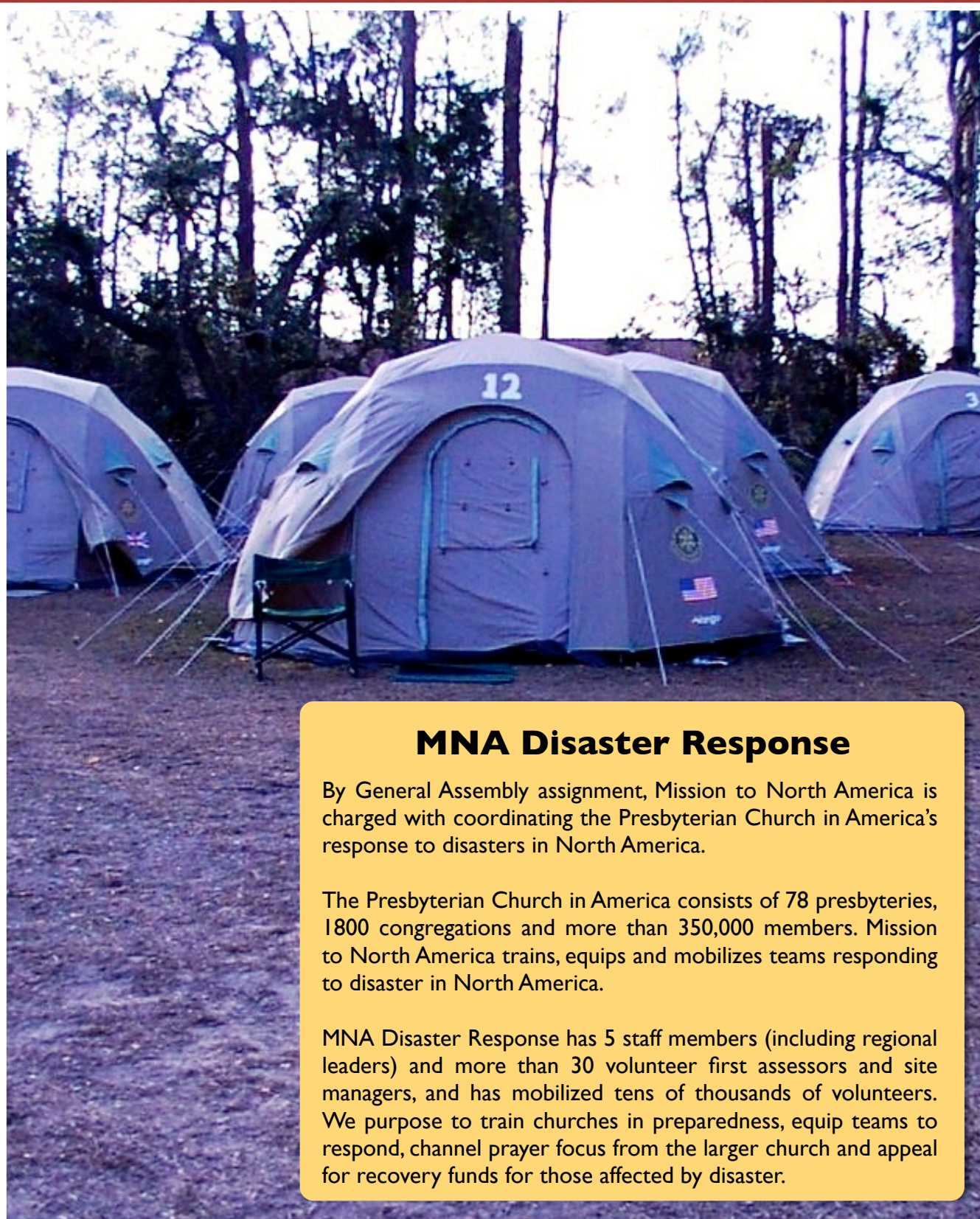
Our Challenge

Our desire is to establish a critically needed, centrally located disaster response warehouse for the pre-positioning of supplies and equipment for our disaster response teams. In doing so, we will accelerate our response time to our churches in desperate need, and facilitate the movement of supplies to our teams on the ground.

Since 2005 Mission to North America Disaster Response has mobilized more than 55,000 volunteers to disaster response worksites across North America. Volunteers assist Presbyterian Church in America congregations as they recover from all types of natural disasters including tornadoes, floods, wildfires, hurricanes and man created calamities and then to reach out into affected communities demonstrating the love of Christ in tangible ways.

MNA Disaster Response has not only mobilized thousands of disaster response volunteers, but has also participated in the restoration of 12 PCA church buildings, repaired hundreds of single family dwellings, provided relief grants to many PCA families, equipped and trained churches in disaster response readiness and provided site management when churches were overwhelmed.





MNA Disaster Response

By General Assembly assignment, Mission to North America is charged with coordinating the Presbyterian Church in America's response to disasters in North America.

The Presbyterian Church in America consists of 78 presbyteries, 1800 congregations and more than 350,000 members. Mission to North America trains, equips and mobilizes teams responding to disaster in North America.

MNA Disaster Response has 5 staff members (including regional leaders) and more than 30 volunteer first assessors and site managers, and has mobilized tens of thousands of volunteers. We purpose to train churches in preparedness, equip teams to respond, channel prayer focus from the larger church and appeal for recovery funds for those affected by disaster.



A North America Disaster Response Warehouse Summary of Use

- 1. Storage for the pre-positioning of large volumes of disaster response equipment and supplies.**
- 2. Shelter for evacuating PCA families.**
- 3. Housing for traveling disaster response teams on the way to disaster worksites.**
- 4. A permanent home for disaster response training.**
- 5. A family friendly missions training camp.**

A Disaster Response Warehouse

Pre-positioning Supplies & Equipment

When a disaster strikes it is important to have supplies and equipment on hand so the response can begin immediately without having to appeal for these things during the critical first days after a disaster event. By having proper supplies and equipment at an adequate facility, response time is quickened and the movement of volunteers is not hindered with the gathering of supplies. Examples of supplies might include:

- Flood buckets
- Blue roofs
- Cleaning supplies
- Carpentry tools
- Chain and Pole Saws
- Ladders
- Water pumps
- Generators
- MREs (Meals Ready to Eat)
- Water
- Equipment Trailers
- Box Trucks
- Bobcats with grapples
- Power Washers
- Meal wagons



A Disaster Response Warehouse

Temporary Housing for Traveling Disaster Response Teams

There is a need to provide housing for traveling disaster response teams to overnight on their way to disaster worksites. Usually mass evacuations are underway and hotel rooms are unavailable and an unwelcome added expense for team members that are already giving vacation days, time away from family and expensive travel.



Our desire is to provide simple bunks, hot showers and an adequate kitchen for our traveling teams. A team of 20 can easily spend \$1000 for a one night stay while on the road-\$2000 for a round trip. That money could be best used to help those in need and to reduce the cost to our volunteers. Reducing the cost always results in greater participation levels by opening the door for new teams that could not join the work in the past.



"He who refreshes others will himself be refreshed." Proverbs 11:24-26



A Disaster Response Warehouse

Shelter for Evacuating PCA Families

Our warehouse dormitory will also be open to PCA families to overnight when evacuating from a disaster and traveling on their way to safety.



“Is it not to share your food with the hungry and to provide the poor wanderer with shelter—when you see the naked, to cloth him, and not to turn away from your own flesh and blood?” Isaiah 58:7



A Disaster Response Warehouse

A Place to Train

Providing a facility for regular onsite disaster response training to churches and presbyteries is a top priority. Churches and presbyteries can send key leaders to annual training events as they prepare their congregations for the certain storms of the future.



A Place to Model and Serve

Opportunities will abound for church mission teams and second career folks to schedule annual trips to help renovate, prepare, stock and maintain the warehouse. We desire participation from every church. We also desire to be good neighbors to our local community by becoming incarnational in ministry to them.



*“For the whole law can be summed up in this one command:
‘Love your neighbor as yourself.’ Galatians 5:14*



The Urgency

Mission to North America is partnering with Tennessee Valley Presbytery to establish the warehouse within the bounds of their presbytery, through their standing Mercy Committee. Because of the global economic downturn, the cost to establish the warehouse is affordable and within our reach if we work together and act now.

The frequency of major storms seems to be increasing, providing many opportunities for ministry to those in desperate need. God's word says, "You are a gracious God and merciful, slow to anger and abounding in steadfast love, and relenting from disaster" Jonah 4:2.

*"Commit to the Lord whatever you do, and your plans will succeed."
Proverbs 16:3*

As the PCA serves the survivors of disaster we also have many opportunities to share the Gospel of Christ. As a result, we see God's mercy and grace demonstrated, even in times of great crisis and severe need.

MNA Disaster Response has been called to prepare the PCA for the certain disasters of the future, and the warehouse is a very vital next step for our denomination as we purpose to be faithful to our calling.





We Invite Your Participation

Mission to North America is entirely funded through individual, church and presbytery giving. The cost to establish a North America disaster response warehouse is a huge challenge for our denomination, but one that can be accomplished with intentionality, biblical strategy and your partnership.

When God laid it on Nehemiah's heart to rebuild the walls of Jerusalem, Nehemiah planned a strategy that we can still look to as our model to establish this vital warehouse. Nehemiah prayed, asking for wisdom, he assessed the task before him, he secured the resources, he recruited leadership and volunteers, and they began together.

Following God's model, we have prayed and asked for wisdom. We have assessed the need based on our experience in responding to every major disaster to impact North America in the last 5 years. We have identified key leaders with competencies beneficial to

"BUT DON'T BEGIN UNTIL YOU COUNT THE COST. FOR WHO WOULD BEGIN CONSTRUCTION OF A BUILDING WITHOUT FIRST CALCULATING THE COST TO SEE IF THERE IS ENOUGH MONEY TO FINISH IT?" LUKE 14:28

help us establish this much needed resource. We have mobilized thousands of volunteers who are now looking to us to take the next steps in strengthening our disaster response ministry in this way.

The final piece of the plan is providing ongoing funding. Will you please consider helping us meet this need?



Bottom Line

The Acquisition Goal

Purchase	\$400,000
Renovation	\$100,000
Initial Equipment Stock	\$200,000
Initial Supply Stock	\$100,000
Total	\$800,000

We Invite Your Participation in the Following Ways

3 Partnerships at \$100,000	\$300,000
6 Partnerships at \$50,000	\$300,000
4 Partnerships at \$25,000	\$100,000
10 Partnerships at \$10,000	\$100,000
Total	\$800,000

Mission to North America is prayerfully seeking financial support from individuals, churches and presbyteries that will enter into a partnership with us to establish this much needed warehouse. Will you please join us in praying that many people will find hope in Christ through our disaster response volunteers equipped through this warehouse, responding to communities in desperate need.

We ask that you prayerfully consider participating through your financial support. You can make a tax-deductible contribution to this vital need at www.pca-mna.org.

You can also mail contributions, payable to Mission to North America, to:
 MNA
 1700 North Brown Road, Suite 101
 Lawrenceville, Georgia 30043-8122

Designate: Disaster Response Warehouse Project

Yearly Operations Budget Goal

Utilities	\$5,000
Insurance	\$10,000
Maintenance	\$10,000
Staff	\$30,000
Total	\$55,000

We Invite Your Participation in the Following Ways

2 partnerships at \$10,000	\$20,000
4 partnerships at \$5,000	\$20,000
15 partnerships at \$1,000	\$15,000
Total	\$55,000

Mission to North America is prayerfully seeking financial support from individuals, churches and presbyteries that will enter into a partnership with us to establish this much needed warehouse. Will you please join us in praying that many people will find hope in Christ through our disaster response volunteers equipped through this warehouse, responding to communities in desperate need.

We ask that you prayerfully consider participating through your financial support. You can make a tax-deductible contribution to this vital need at www.pca-mna.org.

You can also mail contributions, payable to Mission to North America, to:
 MNA
 1700 North Brown Road, Suite 101
 Lawrenceville, Georgia 30043-8122

Designate: Disaster Response Warehouse Operations Budget